

DETECTAMETTM



DETECTAMET™

**EU | Distributor
Handbook**



**BEST
SELLERS**



Stationery & Office

[ACCESS IMAGES](#)

Metal Detectable & X-Ray Visible Heavy-Duty Retractable Pens

Dist. Excel Product Code **101-**



Laser
Engraving &
Pad Printing
Available



DETECTAMET

Available in:

- 9 Housing Colours
- 3 Housing Styles
- 4 Ink Colours 
- 4 Ink Types [\(Learn more\)](#)

EXPLORE MORE

DATASHEET

Metal Detectable & X-Ray Visible Elephant™ Retractable Pen

Dist. Excel Product Code 104-



Laser
Engraving &
Pad Printing
Available



DETECTAMET

Available in:

- 9 Housing Colours
- 3 Housing Styles
- 4 Ink Colours 
- 4 Ink Types [\(Learn more\)](#)

EXPLORE MORE

DATASHEET

Metal Detectable & X-Ray Visible Elephant™ One-Piece Stick Pen

Dist. Excel Product Code 105-




Laser
Engraving &
Pad Printing
Available



DETECTAMET

Available in:

- 9 Housing Colours
- 3 Housing Styles
- 4 Ink Colours 
- Standard Ink only
[\(Learn more\)](#)

EXPLORE MORE

DATASHEET

Metal Detectable & X-Ray Visible Standard Pen Refills

Dist. Excel Product Code **100-I**



DETECTAMET

Specifications

- Standard Ink
- Suitable for Ambient conditions 0°C up to 30°C
- Writing line width 1 mm
- Available in 4 Ink Colours



[EXPLORE MORE](#)

[DATASHEET](#)

Metal Detectable & X-Ray Visible Gel Ink Pen Refills

Dist. Excel Product Code **100-I**



DETECTAMET

Specifications

- Gel Ink
- Suitable for Ambient conditions - 5°C up to 30°C
- Writing line width 0.7 mm
- Available in 4 Ink Colours



[EXPLORE MORE](#)

[DATASHEET](#)

Metal Detectable & X-Ray Visible Fine Tip Pen Refills

Dist. Excel Product Code **100-I**



DETECTAMET

Specifications

- Find Tip Ink
- Suitable for Ambient conditions 0°C up to 30°C
- Writing line width 0.7mm
- Available in 4 Ink Colours



[EXPLORE MORE](#)

[DATASHEET](#)

Ink Types

Standard Refills

- Writing line width 1 mm (39.4 mils)
- Ambient conditions 0°C up to 30°C (32 to 86°F).

Gel Refills

- Writing line width 0.7 mm (27.6 mils)
- Cold environments
- Dusty environments
- Chilled conditions -5°C up to 30°C (23 to 86°F).

Pressurised Cryo Refills

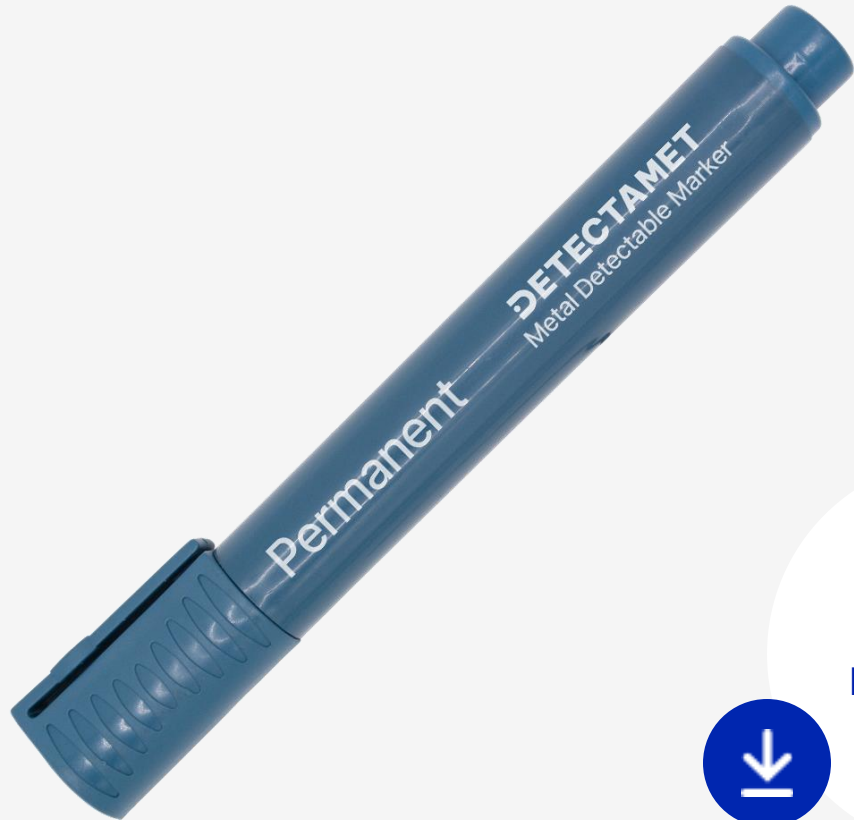
- Writing line width 1.2 mm (47.2 mils)
- Suitable for: Wet areas, Powdery surfaces, Greasy surfaces, Underwater, Writing upside down
- Unlimited shelf life
- Extreme temperatures -15°C up to 60°C (5 to 140°F) eg. freezers/cold stores.

Fine Tip Refills

- Writing line width 0.7 mm (27.6 mils)
- Ambient conditions 0°C up to 30°C (32 to 86°F).

Metal Detectable & X-Ray Visible Non-Retractable Permanent Markers

Dist. Excel Product Code **146-A06-**




Laser
Engraving &
Pad Printing
Available



DETECTAMET

Available in:

- Blue Housing
- 4 Ink Colours 
- Bullet or Chisel Tip



[EXPLORE MORE](#)

[DATASHEET](#)

Metal Detectable & X-Ray Visible Non-Retractable Whiteboard Markers

Dist. Excel Product Code **145-A06-**




Laser
Engraving &
Pad Printing
Available



DETECTAMET

Available in:

- Blue Housing
- 4 Ink Colours 
- Bullet or Chisel Tip



[EXPLORE MORE](#)

[DATASHEET](#)

Metal Detectable & X-Ray Visible Retractable Permanent Markers

Dist. Excel Product Code **146-A05-**




Laser
Engraving &
Pad Printing
Available



DETECTAMET

Available in:

- Blue Housing
- 4 Ink Colours 
- Bullet or Chisel Tip



[EXPLORE MORE](#)

[DATASHEET](#)

Metal Detectable & X-Ray Visible Retractable Whiteboard Markers

Dist. Excel Product Code **145-A05-**




Laser
Engraving &
Pad Printing
Available



DETECTAMET

Available in:

- Blue Housing
- 4 Ink Colours 
- Bullet or Chisel Tip



[EXPLORE MORE](#)

[DATASHEET](#)

Metal Detectable & X-Ray Visible Whiteboard Erasers

Dist. Excel Product Code **305-S642-A269**



Suitable for
Non-Retractable
Whiteboard
Markers



DETECTAMET

Specifications

- Secures two non retractable whiteboard markers.
- Magnetic Strip adheres to metallic whiteboard surface.

[EXPLORE MORE](#)

[DATASHEET](#)

Metal Detectable & X-Ray Visible Retractable Food and Meat Markers

Dist. Excel Product Code **148-T04-**



Laser
Engraving &
Pad Printing
Available



DETECTAMET

Available in:

- Blue Housing
- Housing Styles: Clip
- Bullet Tip
- Food Ink Colours
- Meat Ink Colours



[EXPLORE MORE](#)

[DATASHEET](#)

Metal Detectable & X-Ray Visible Non-Retractable Highlighters

Dist. Excel Product Code **150-A06-**



Laser
Engraving &
Pad Printing
Available



DETECTAMET

Available in:

- Blue Housing
- Chisel Tip
- 5 Ink Colours
- Sold in pack of 5



[EXPLORE MORE](#)

[DATASHEET](#)

Metal Detectable & X-Ray Visible Retractable Highlighters

Dist. Excel Product Code **150-A05-**



Laser
Engraving &
Pad Printing
Available



Available in:

- Blue Housing
- Chisel Tip
- 5 Ink Colours
- Sold in pack of 5



[EXPLORE MORE](#)

[DATASHEET](#)

DETECTAMET

Metal Detectable & X-Ray Visible Clipboards

Dist. Excel Product Code **300-00-**



**Laser
Engraving &
Pad Printing
Available**



DETECTAMET

Available in:

- 9 colours
- A3, A4, and A5 sizes
- Multiple clip types
- Magnetic or hanging hook options



Economy Stainless Steel Clips
(Capacity: 50 Sheets)



Heavy-Duty Stainless Steel Clips
(Capacity: 100 Sheets)



Zinc Plated Clipboard Clips with Pen
Holders (Capacity: 50 Sheets)

EXPLORE MORE

DATASHEET

EU | DISTRIBUTOR HANDBOOK

Metal Detectable & X-Ray Visible Aluminium & Stainless Steel Clipboards

Dist. Excel Product Code **300-00-**



**Laser
Engraving &
Pad Printing
Available**



DETECTAMET

Available in:

- A3, A4, and A5 sizes
- Multiple clip types
- Magnetic or hanging hook options



Economy Stainless Steel Clips
(Capacity: 50 Sheets)



Heavy-Duty Stainless Steel Clips
(Capacity: 100 Sheets)



Zinc Plated Clipboard Clips with Pen
Holders (Capacity: 50 Sheets)

EXPLORE MORE

DATASHEET A

DATASHEET S

Metal Detectable & X-Ray Visible Storage Clipboards

Dist. Excel Product Code **302-T184-P01-A12**



Laser
Engraving &
Pad Printing
Available



DETECTAMET

Specifications

- Clip allows use as a clipboard
- Paper capacity: 50 Sheets
- Size: 405 x 255 x 35mm plus clip

[EXPLORE MORE](#)

[DATASHEET](#)

Metal Detectable & X-Ray Visible Stationary Scissors

Dist. Excel Product Code **206-S237-P01-Q01**



Laser
Engraving &
Pad Printing
Available



Specifications

- Manufactured from EU and FDA food contact approved detectable polymer
- Handle colour: blue
- Blade length: 90 mm (3.54")
- Scissors are designed to be taken apart to enable thorough cleaning
- Suitable for laser engraving, making them ideal for sequential numbering

[EXPLORE MORE](#)

[DATASHEET](#)

Metal Detectable & X-Ray Visible Heavy-Duty Scissors with St/St Blades

Dist. Excel Product Code **206-1559-P01-Q01**



Laser
Engraving &
Pad Printing
Available



DETECTAMET

Specifications

- Food Grade Material
- Stainless Steel blades
- Ergonomic handles
- Heavy Duty Design
- Suitable for processing environments
- Shatter resistant material
- Serrated blade
- Blade length – 80.5mm / Handle length – 104.3mm / Maximum open-blade width – 155mm

[EXPLORE MORE](#)

[DATASHEET](#)

**BEST
SELLERS**



Storage, Mixing & Handling

[ACCESS IMAGES](#)

Metal Detectable & X-Ray Visible Plastic Hand Scrapers

Dist. Excel Product Code **523-S10**



Laser
Engraving &
Pad Printing
Available

Available in:

- 9 Colours
- 2 sizes (Small: 75 x 203 mm /Large: 100 x 247 mm)

[EXPLORE MORE](#)

[DATASHEET](#)

DETECTAMET

Metal Detectable & X-Ray Visible Flexible Scrapers

Dist. Excel Product Code **523-S089-** or **523-S091**



DETECTAMET

Available in:

- 9 Colours
- 2 sizes (Small: 160 x 100 mm/
Large: 225 x 118 mm)

[EXPLORE MORE](#)

[DATASHEET](#)

Metal Detectable & X-Ray Visible Square Scoops

Dist. Excel Product Code **514-S08**



Laser
Engraving &
Pad Printing
Available

Available in:

- 9 Colours
- 4 sizes (Mini: 100 ml - Approx 500 g/Small: 350 ml - Approx 1000 g/Medium: 800 ml - Approx 1500 g/Large: 1250 ml- Approx 2000 g)

[EXPLORE MORE](#)

[DATASHEET](#)



DETECTAMET

Metal Detectable & X-Ray Visible Flour Scoops

Dist. Excel Product Code **515-S08**

Laser
Engraving &
Pad Printing
Available



DETECTAMET

Available in:

- 9 Colours
- 4 sizes (Small: 250 ml/Medium: 500 ml/Large: 1000 ml)

[EXPLORE MORE](#)

[DATASHEET](#)

Metal Detectable & X-Ray Visible Detectable Timer

Dist. Excel Product Code **215-P01**



Laser
Engraving &
Pad Printing
Available



Specifications

- Performs well in most food related atmospheric conditions.
- Avoid direct contact with wet hands or surfaces.
- Fold out stand.
- Magnet for attaching to machines.
- Requires 1 x AAA battery: Not supplied.
- Sizes: 68 x 79mm (2.68 x 3.11")
- Colour: Blue

[EXPLORE MORE](#)

[DATASHEET](#)

Metal Detectable & X-Ray Visible Digital Stopwatch

Dist. Excel Product Code **201-A65-P01-A55**



Laser
Engraving &
Pad Printing
Available



DETECTAMET

Specifications

- Engineered for use in food processing, beverage manufacturing and pharmaceutical environments.
- Perfect for quality control checks, production timing and process monitoring.
- Available with or without neck chain.
- Requires 1 x LR1130 battery: Supplied.
- Size: 75 x 54 x 23 mm (2.95 x 2.12 x 0.90")
- Colour: Blue

[EXPLORE MORE](#)

[DATASHEET](#)

Metal Detectable & X-Ray Visible Food Temperature Probe

Dist. Excel Product Code **110-**




Laser
Engraving &
Pad Printing
Available



DETECTAMET

Specifications

- Measures temperature within a wide range: from -50°C to 300°C.
- Requires 1 x AAA battery: Not supplied.
- Size: 155 x 45 mm (6.10 x 1.77")
probe length 112 mm (4.40")
- 2 Colours 

[EXPLORE MORE](#)

[DATASHEET](#)

Metal Detectable & X-Ray Visible Sampling Cutlery

Dist. Excel Product Code 529-P95, 532-P95, 527-P95



Laser
Engraving &
Pad Printing
Available



Specifications

- Manufactured from EU & FDA food contact approved detectable polymer
- Suitable for correctional systems

[EXPLORE MORE](#)

[DATASHEET](#)

**BEST
SELLERS**



Workwear & PPE

[ACCESS IMAGES](#)

Metal Detectable & X-Ray Visible Disposable Nitrile Gloves

Dist. Excel Product Code **455-A265**



DETECTAMET



Specifications

- Perfect for use within a food manufacturing or processing environment.
- Tear resistant and beaded cuff
- Latex-free and Powder-free Nitrile (reduces the risk of allergic reactions as well as minimising the risk of contamination)
- EU 1935/2004 & 10/2011.
- FDA 21 CFR food-contact.
- Suitable for use up to 40 °C (104°F).
- Ambidextrous and textured fingertips for more secure grip
- 4 sizes: S, M, L, XL
- [Winner of the best new product at SOFHT Awards 2023](#)

EXPLORE MORE

DATASHEET

Metal Detectable & X-Ray Visible Double Sided Swipe/ ID Card Holder

Dist. Excel Product Code **212-T889**



DETECTAMET

Specifications

- Control access to secure areas by securing swipe cards and identity cards. Also available with a safety chain (pack of 10).
- Double-sided design for holding two cards simultaneously
- Three internal clipping points for secure card retention
- Three lanyard attachment points – allowing horizontal or vertical storage
- Surrounding lip design prevents cards from falling out unintentionally
- Durable anti-bend & shatter design
- Food-safe material construction
- Available in 9 different colours to support with cross-contamination prevention and visual identification

[EXPLORE MORE](#)

[DATASHEET](#)

Metal Detectable & X-Ray Visible Lightweight Safety Glasses

Dist. Excel Product Code **421-T873**



DETECTAMET

Specifications

- With detectable arms, make them perfect for use in the food and pharmaceutical industries. Suitable for continuous use.
- A Blue 80% VLT 'indoor tint' lens with anti-fog lens coating for long lasting durability
- Polycarbonate lenses absorb 99.9% of harmful UV A, B and C, 180-380nm
- Weight: 20g
- Compatible with glasses cord

[EXPLORE MORE](#)

[DATASHEET](#)

Metal Detectable & X-Ray Visible Mob Caps

Dist. Excel Product Code **446D-T662**



DETECTAMET

Specifications

- Metal detectable by an extra wide 8 mm (0.31") aluminium foil strip
- Double-stitched elastic band for secure, flexible fit
- Soft, lightweight, & breathable for user comfort
- One size fits all
- Non-woven fabric, Non-toxic, Latex free, Lint free, One time use product, Weight: 10 GSM, Sold in packs of 1000
- Colours: blue, black, red, green, yellow, white, purple, pink
- Made in the UK

[EXPLORE MORE](#)

[DATASHEET](#)

**BEST
SELLERS**

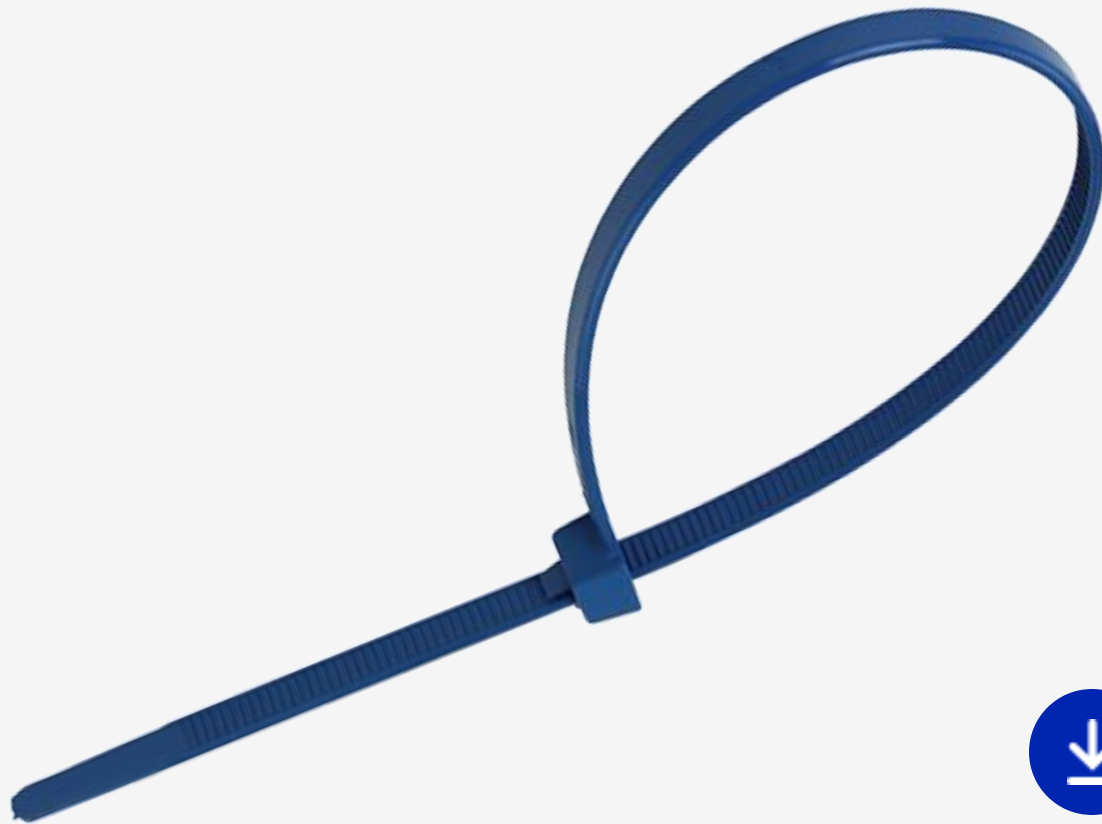


Tags, Ties, Labels & Seals

[ACCESS IMAGES](#)

Metal Detectable & X-Ray Visible Cable Ties

Dist. Excel Product Code 800-



DETECTAMET

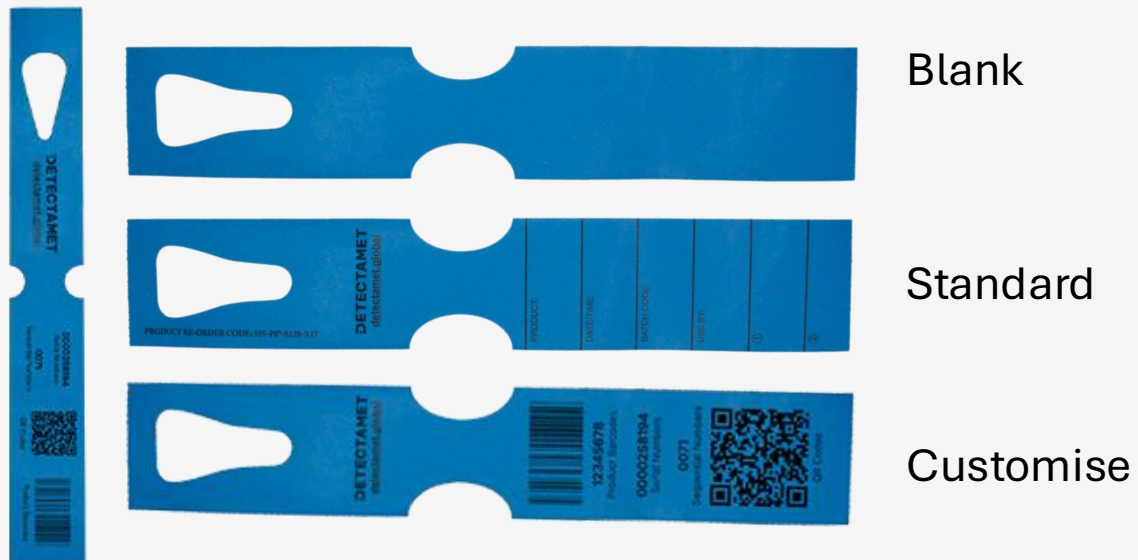
Available in:

- Disposable, [Reusable](#) Options
- Detectable [Nylon](#), [Detectable Nylon with Stainless Steel Lock](#), and [Detectable Polypropylene with Stainless Steel Lock](#) (Buoyant, suitable to use in liquid)
- Large size and tensile strength variety available to choose from

EXPLORE MORE

Metal Detectable & X-Ray Visible Keyhole Loop Tags

Dist. Excel Product Code 555-



DETECTAMET

Available in:

- Metal Detectable Core Available
- Printed on the outside of the spool as standard
- 2 Sizes: Small 25 x 190 mm (0.98 x 7.48") - Blank Print / Large 50 x 279 mm (1.97 x 10.98") - Standard Print
- Sold in rolls of 500
- Standard material: heat resistant to 150°C/302°F / High heat material: heat resistant to 250°C/482°F (large size tags only)
- 11 Colours: blue, black, red, green, yellow, white, purple, orange, pink, brown and beige
- Customise Printing Available

[EXPLORE MORE](#)

[DATASHEET](#)

Metal Detectable & X-Ray Visible Looped Identification Tags

Dist. Excel Product Code 550-



Laser
Engraving &
Pad Printing
Available



DETECTAMET

Available in:

- Reusable tags, suitable for numerous uses, including tagging of machinery, equipment & produce.
- Manufactured from EU and FDA food contact approved detectable polymer
- 9 Colours: blue, black, red, green, yellow, white, purple, orange and pink
- Size: length 283 mm, head 63 x 87 mm
- Sold in packs of 25

[EXPLORE MORE](#)

[DATASHEET](#)

**BEST
SELLERS**



Professional & Safety Knives

[ACCESS IMAGES](#)

Metal Detectable & X-Ray Visible Universal Bag Cutter

Dist. Excel Product Code **615-K610-T797-P30**



Laser
Engraving &
Pad Printing
Available



Specifications

- Ideal for opening large bags and sacks
- Open design means less risk of build up. Can be cleaned with compressed air, water or non-abrasive chemicals
- Long Stainless Steel blade allows cutting depths of up to 32mm (1.25") depth
- Easy ergonomic lever with locking mechanism for easy blade change / Built-in lanyard loop for tethering
- Size: 158 x 27 x 76 mm (6.22 x 1.06 x 2.99")
- Aluminium body with Metal Detectable and X-ray visible plastic handle
- Supplied with one blade (Replacement blades available)

[EXPLORE MORE](#)

[DATASHEET](#)

Metal Detectable & X-Ray Visible Safety Knife

Dist. Excel Product Code **615R-K120-T037-A118**



Laser
Engraving &
Pad Printing
Available



Specifications

- Suitable for ambidextrous use.
- Automatic blade retraction.
- Security key for controlled blade change.
- Stainless Steel blade.
- Replacement blades with two cutting edges.
- Size: 165 x 45 mm (6.49 x 1.77")

[EXPLORE MORE](#)

[DATASHEET](#)

Metal Detectable & X-Ray Visible Safety Knives with Auto Retracting Blade

Dist. Excel Product Code **615-K104-T184-P01**



Laser
Engraving &
Pad Printing
Available



Specifications

- Light and compact in shape, ideal for cutting packaging.
- Automatic blade retraction, stainless steel blade
- Usage: cardboard, plastic wrapping and plastic adhesive tape
- Colour: blue
- Size: 110mm (4.33") x 25mm (0.98")
- No snap-off blade to reduce the risk of contamination

[EXPLORE MORE](#)

[DATASHEET](#)

Metal Detectable & X-Ray Visible Aluminium Safety Knife

Dist. Excel Product Code **615-K102-T038-P30**



Laser
Engraving &
Pad Printing
Available



Specifications

- Heavy-duty knife, ideal for cutting packaging and thicker cardboard
- Suitable for ambidextrous use
- Semi-automatic spring-loaded retraction with reversible stainless steel double-edged blade (replacement blades available; no snap-off to reduce contamination risk)
- Aluminium body with blue detectable plastic parts
- **Usage:** Cardboard, plastic wrapping, sacks/bags, netting, adhesive tape, bubble wrap, plastic strapping
- **Colours:** Blue/Aluminium
- **Size:** 143 mm (5.62") x 31 mm (1.22")

[EXPLORE MORE](#)

[DATASHEET](#)

**BEST
SELLERS**



Engineering

[ACCESS IMAGES](#)

Metal Detectable & X-Ray Visible Silicone Rubber Sheets

Dist. Excel Product Code 815- & 817-



DETECTAMET

Specifications

- Matte & Glossy
- Metal detectable food-grade silicone (Matte also X-ray visible)
- Easily converted into gaskets, seals, washers, etc.
- FDA compliant (21 CFR 177.2600); Glossy also EU compliant (EU1935/2004)
- Temperature range: Matte -60°C to +200°C | Glossy -60°C to +225°C
- Hardness: Matte 60° ±5 | Glossy +3 (max)
- Available in various sizes & thicknesses (others on request)
- Colour: Blue

[EXPLORE MORE](#)

[DATASHEET](#)

**BEST
SELLERS**



Calibration Test Pieces

[ACCESS IMAGES](#)

Metal Detector Test Sticks

Dist. Excel Product Code **Stick-**



DETECTAMET

Specifications

- Ensure your metal detection systems perform flawlessly with the Detectamet Hi-Vis Acrylic Metal Detector Test Stick, designed for precision, compliance, and food safety assurance
- Manufactured from acrylic (blue, red, green, yellow, orange, or black)
- Standard contaminant colours: Ferrous (red), Non-Ferrous (green), Stainless Steel 304 & 316 (blue), Aluminium & Phosphor Bronze (yellow)
- Available in various sizes and contaminant types
- Free certificate of conformity supplied with all test pieces
- Suitable for laser engraving, and bespoke options available

EXPLORE MORE

Metal Detector Test Ball

Dist. Excel Product Code **Ball-SC**



Specifications

- Supports HACCP compliance by enabling regular QA testing at critical control points
- Manufactured from high-visibility acrylic, etched with a traceable code
- Standard contaminant colours: Ferrous (red), Non-Ferrous (green), Stainless Steel 304 & 316 (blue), Aluminium & Phosphor Bronze (yellow)
- Available in a variety of sizes and contaminant types
- Free certificate of conformity supplied with all test pieces
- Suitable for laser engraving

[EXPLORE MORE](#)

X-Ray Detector ID Test Card

Dist. Excel Product Code ID Test Card-SC



DETECTAMET

Specifications

- Supports HACCP compliance and helps demonstrate your commitment to quality management.
- Multi-bearing laminated metal & X-ray detector test card
- Ideal for sliding between packaging and food items
- Wipe-clean surface
- Manufactured in high-visibility colours with a printed, traceable code
- Available in various sizes and contaminant types
- Free certificate of conformity supplied with all test pieces
- Bespoke options available on request

[EXPLORE MORE](#)

DETECTAMETTM

Get In Touch!

Address

Regioparkring 1,
Mönchengladbach, 41199,
Germany

Phone

+492 161 9499 008

Email

sales@detectamet.de

See full range at: detectamet.eu

[ACCESS IMAGES](#)